

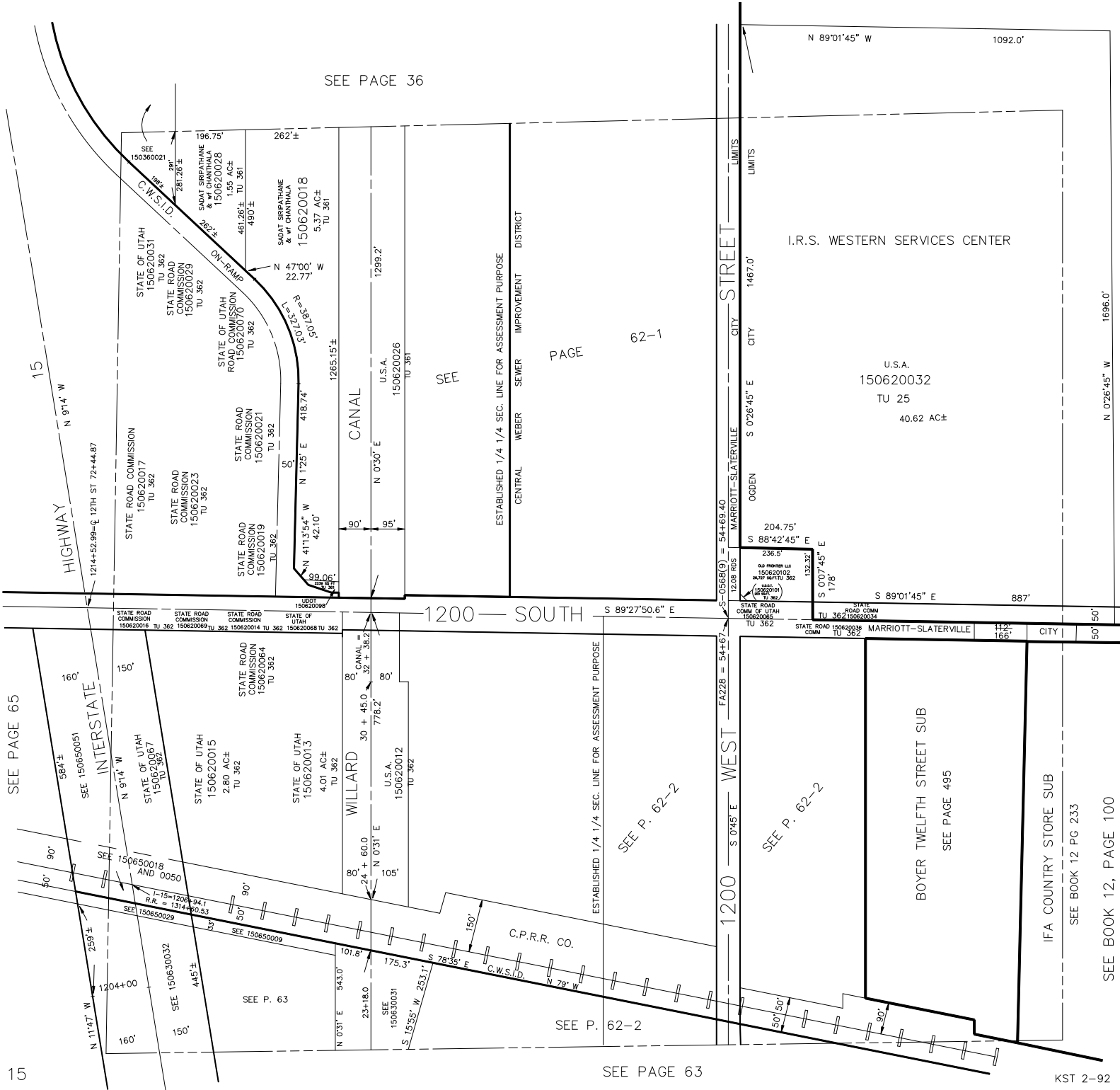
NE 1/4  
SECTION 24, T.6N., R.2W., S.L.B. & M.

IN MARRIOTT-SLATERVILLE CITY, OGDEN CITY & WEBER COUNTY

TAXING UNITS: 25, 361, 362,

SCALE 1" = 200'

SEE PAGE 36



SEE PAGE 65

SEE P. 62-2

SEE P. 62-2

SEE BOOK 12, PAGE 100

SEE BOOK 12, PG 233

SEE PAGE 495

PAGE

62-1

SEE

I.R.S. WESTERN SERVICES CENTER

U.S.A.  
150620032  
TU 25  
40.62 AC±

ESTABLISHED 1/4 1/4 SEC. LINE FOR ASSESSMENT PURPOSE  
CENTRAL WEBER SEWER IMPROVEMENT DISTRICT

CANAL

WILLARD

1200 SOUTH

1200 WEST

BOYER TWELFTH STREET SUB

IFA COUNTRY STORE SUB

STREET

LIMITS

LIMITS

LIMITS

LIMITS

LIMITS

1092.0'

N 89°01'45" W

1467.0'

CITY

CITY

1467.0'

S 0°26'45" E

1467.0'

MARRIOTT-SLATERVILLE

ODDEN

1467.0'

12.08 RDS

0568(9) = 54+69.40

12.08 RDS

12.08 RDS

12.08 RDS

12.08 RDS

12.08 RDS

12.08 RDS

12.08 RDS

12.08 RDS

12.08 RDS

12.08 RDS

12.08 RDS

12.08 RDS

12.08 RDS

12.08 RDS

12.08 RDS

12.08 RDS

12.08 RDS

12.08 RDS

12.08 RDS

12.08 RDS

12.08 RDS

12.08 RDS

12.08 RDS

12.08 RDS

12.08 RDS

12.08 RDS

12.08 RDS

12.08 RDS

12.08 RDS

12.08 RDS

12.08 RDS

12.08 RDS

12.08 RDS

12.08 RDS

12.08 RDS

12.08 RDS

12.08 RDS

12.08 RDS

12.08 RDS

12.08 RDS

12.08 RDS

12.08 RDS

12.08 RDS

12.08 RDS

12.08 RDS

12.08 RDS

12.08 RDS